

Optical Splice Closure

04

FitOSC series are closures with mechanical sealing /gel sealing, which are designed for all cable application environments such as duct, aerial, buried and man-hole. FitOSC supports numerous functions such as mid-span, branch and direct splice. Accommodated with flexible splice trays and various accessories are available for many scenarios. Rigorous tests are performed to approve the best quality for network reliability.

Gel sealing

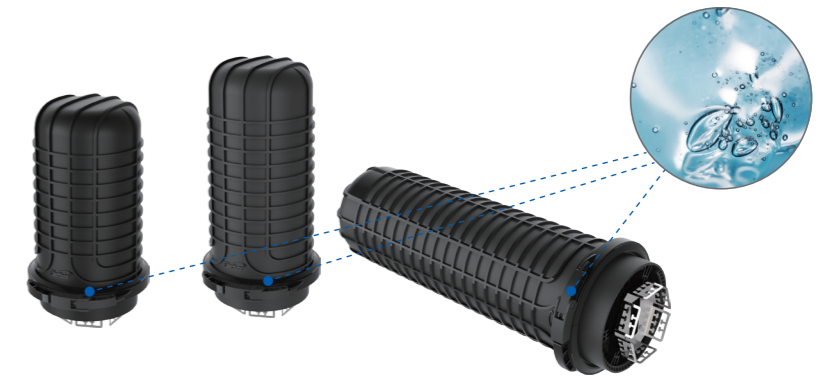


FitOSC-300N series

Type	Size (D×L, mm)	Splice tray capacity	Number of splice tray	Max capacity (single fiber)	Sealing mode	Temperature range (°C)
FitOSC-300N-A	Φ300 x 450	2F	24 pcs	48 cores	Mechanical sealing (Gel sealing)	-40~+65
FitOSC-300N-B	Φ300 x 530	2F	48 pcs	96 cores		-40~+65
FitOSC-300N-C	Φ300 x 760	2F	120 pcs	240 cores		-40~+65

Features

· Gel sealing



· Modular design

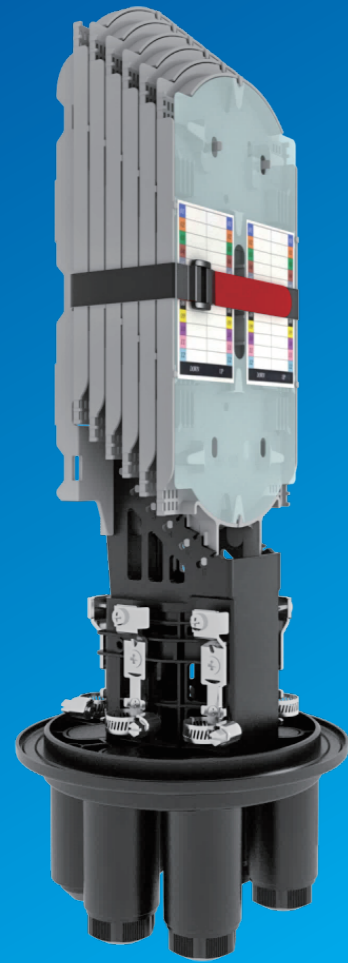


· New appearance design





Mechanical/Heat-shrinkable sealing



FitOSC-220X-A



Features

- High strength materials
- Dome design construction with mechanical seal
- Mid-span operation, no need to cut cables



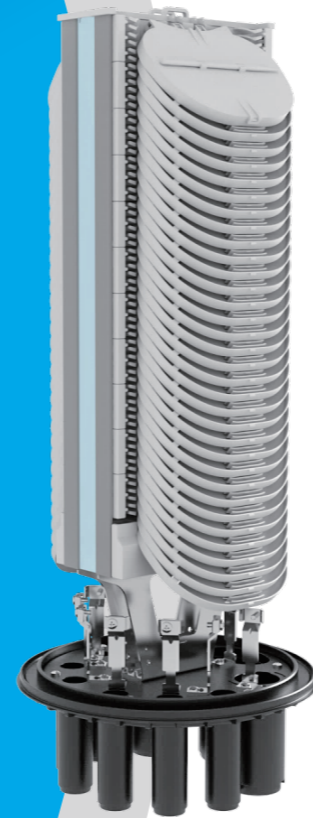
FitOSC-220R



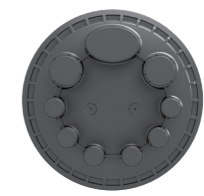
FitOSC-220J

FitOSC-220 series

Type	Size (D×L, mm)	Capacity (F)	Cable ports	Adapter	Sealing mode
FitOSC-220R-C104-V1xx	φ220×360	12~48	1+4	\	Heat-shrink
FitOSC-220R-A104-V2xx	φ220×480	12~144	1+4	\	Heat-shrink
FitOSC-220J-C104-V1xx	φ220×360	12~48	1+4	\	Mechanical
FitOSC-220J-A104-V2xx	φ220×480	12~144	1+4	\	Mechanical
FitOSC-220J-T	φ220×480	12~48	1+4	20	Mechanical



FitOSC-300X-B



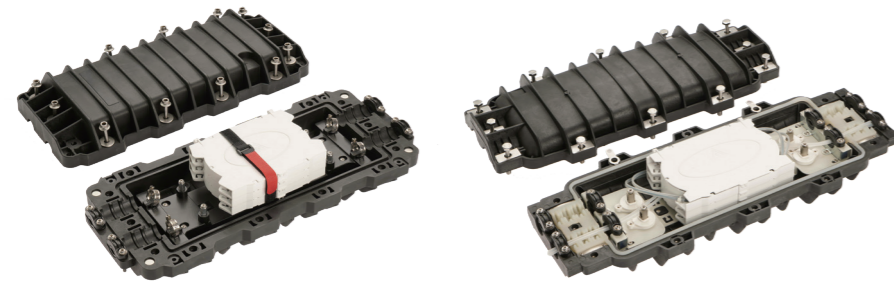
FitOSC-300R



FitOSC-300J

FitOSC-300 series

Type	Size (D×L, mm)	Capacity (F)	Cable ports	Sealing mode
FitOSC-300R-C108-12xx	φ300×370	12~216	1+8	Heat-shrink
FitOSC-300R-A108-12xx	φ300×505	12~432	1+8	Heat-shrink
FitOSC-300R-B108-12xx	φ300×625	12~792	1+8	Heat-shrink
FitOSC-300J-A109-40XX	φ300×505	12~480	1+7	Mechanical

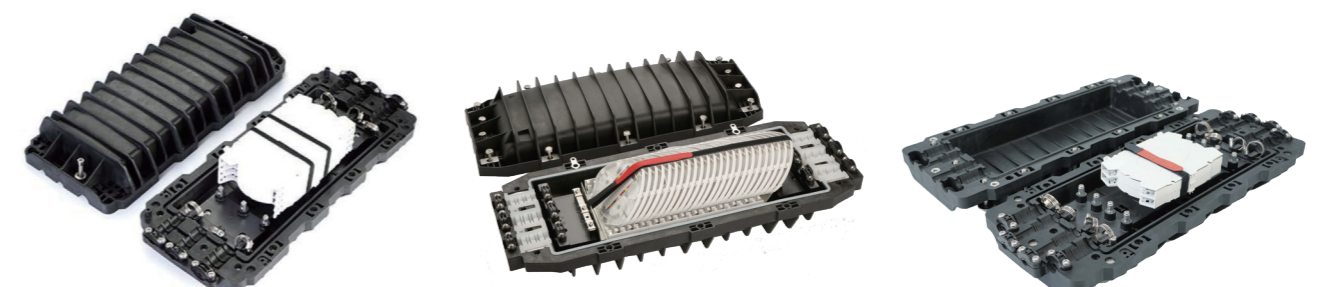
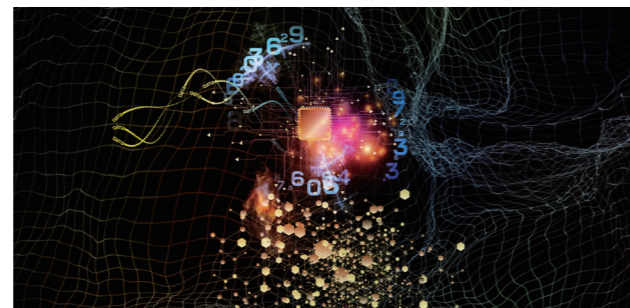


FitOSC-H4-A

FitOSC-H4-B

FitOSC-H4 series

Type	Size (L×W×D,mm)	Capacity (F)	Cable ports	Sealing mode
FitOSC-H4-A-S7-7702	423x177x85	48	2+2	Mechanical (sealing mud)
FitOSC-H4-A-S4-7803	483x200x120	144	2+2	Mechanical (sealing mud)
FitOSC-H4-A-S2-7806	540x211x156	288	2+2	Mechanical (sealing mud)
FitOSC-H4-B-S1-3603	533x209x104	96	2+2	Mechanical (Silicone Rubber)



FitOSC-H6-A

FitOSC-H6-B

FitOSC-H8-A

FitOSC-H6 series

Type	Size (L×W×D,mm)	Capacity (F)	Cable ports	Cable ports
FitOSC-H6-A-S3-7702	423x181x85	48	3+3	Mechanical (sealing mud)
FitOSC-H6-A-S1-7803	536x210x120	144	3+3	Mechanical (sealing mud)
FitOSC-H6-A-S2-7806	536x210x150	288	3+3	Mechanical (sealing mud)
FitOSC-H6-B-S1-1305	648x253x158	180	3+3	Mechanical (Silicone Rubber)
FitOSC-H6-B-S1-1424	648x253x158	288	3+3	Mechanical (Silicone Rubber)

FitOSC-H8 series

Type	Size (L×W×D,mm)	Capacity (F)	Cable ports	Sealing mode
FitOSC-H8-A-S3-7702	423x197x85	48	4+4	Mechanical (sealing mud)
FitOSC-H8-A-S1-7803	555x214x120	144	4+4	Mechanical (sealing mud)
FitOSC-H8-A-S2-7806	555x214x150	288	4+4	Mechanical (sealing mud)